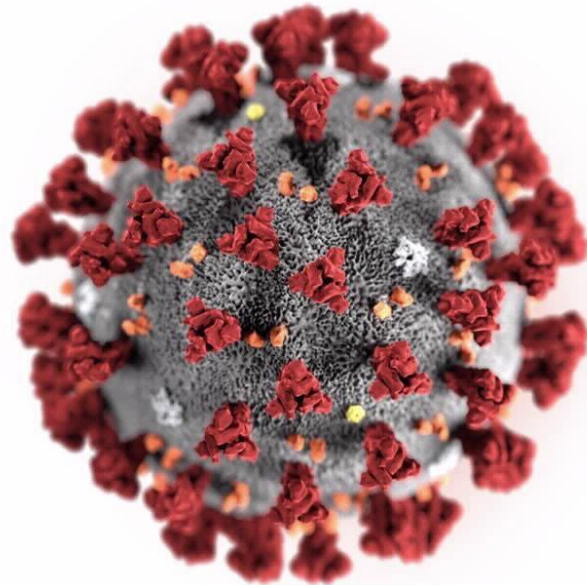


COVID Command Center (C3)



Tuesday, July 21, 2020



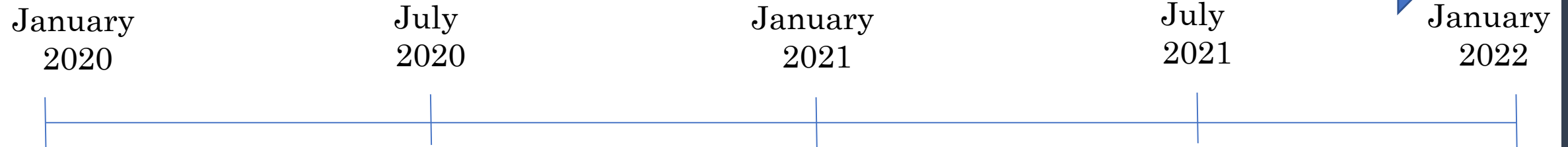
COVID-19 Response Timeline

Emergency Response
(Current State)

Phased Reopening

Sustained Response
(COVID Command Center)

Long-Term Recovery



Covid-19 County Comparisons

City	County	State	Cases/1000	Deaths/100,000	Tests/1000
San Francisco	San Francisco	CA	5.6	6.0	3.83
Los Angeles	Los Angeles	CA	14.2	38.4	2.09
Seattle	King	WA	5.6	28.0	1.64
Denver	Denver	CO	13.2	64.5	2.59
Atlanta	Fulton	GA	11.5	31.3	N/A
Miami	Miami-dade	FL	27.8	41.1	N/A
Boston	Suffolk	MA	25.4	127.8	N/A
DC	DC	DC	15.8	81.7	N/A
Baltimore	Baltimore City	MD	10.9	45.1	1.45
Philadelphia	Philadelphia	PA	17.7	105.1	1.45
New York City	New York City	NY	26.2	278.3	2.08

Source: JHU CSSE (<https://www.arcgis.com/apps/opsdashboard/index.html#/bda7594740fd40299423467b48e9ecf6>)

And Local County DPH Websites

Updated July 17, 2020

From Operations Centers to Unified Command



Break down silos



Eliminate duplicative work &
save time



Single set of objectives



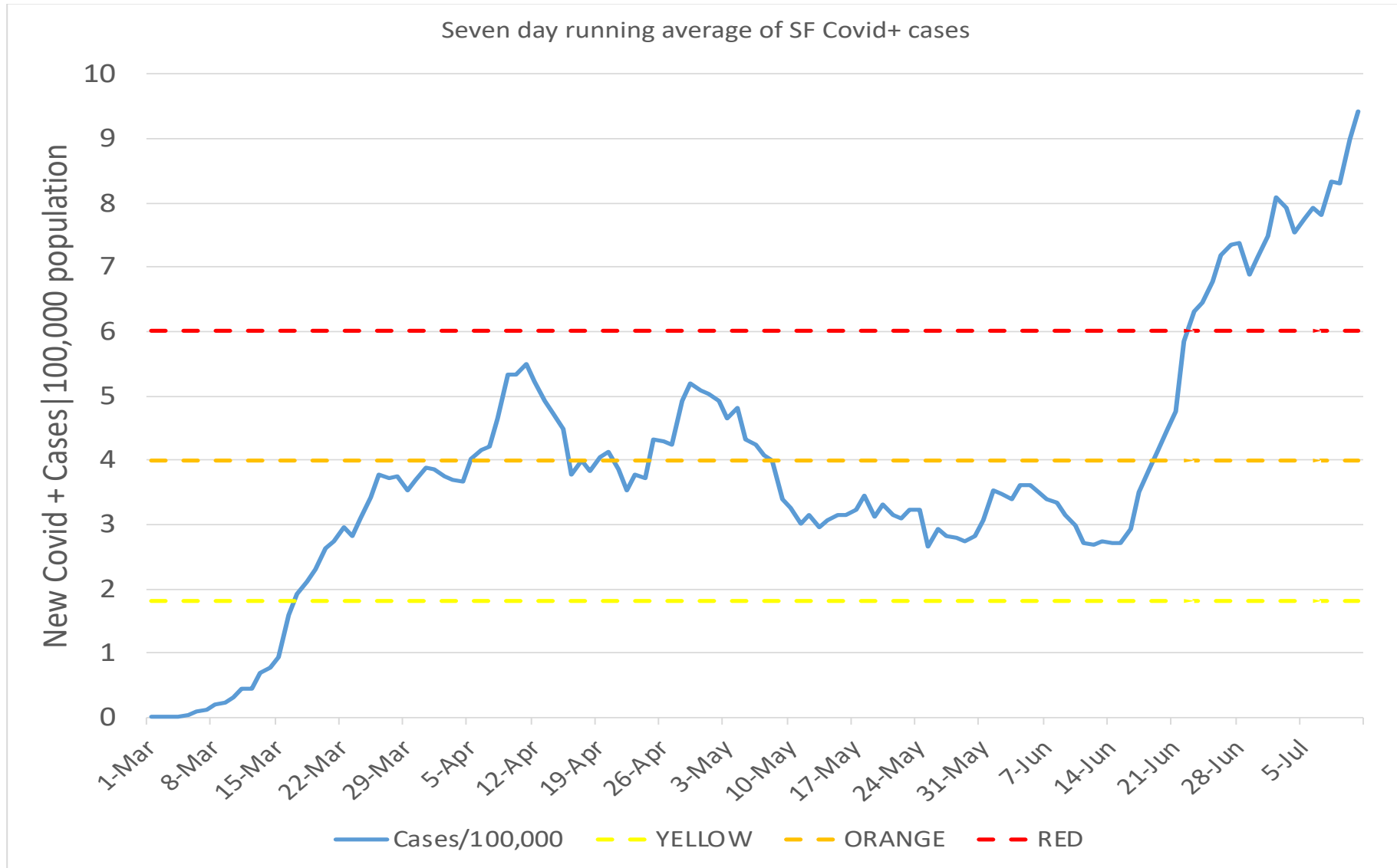
Clear reporting structure &
decision-making authority



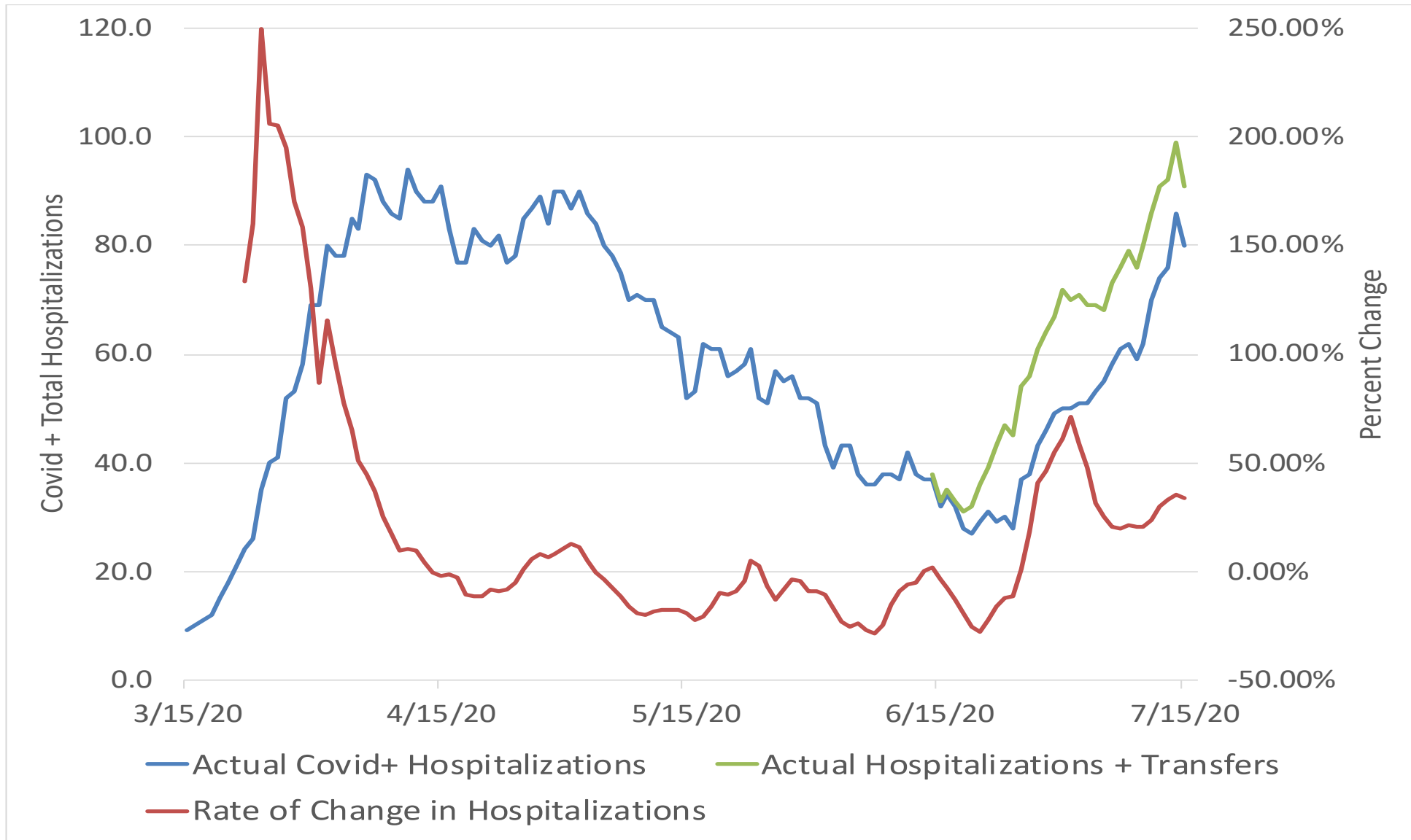
Improve collaboration,
communication & resource use

Category	Key Question	Indicator	Triggers to raise to a higher level	Triggers to lower level	Level 1 New Normal	Level 2 Low Alert	Level 3 Moderate Alert	Level 4 High Alert
Health Care System	Are there early signs of an increase in hospitalizations	Rate of increase in total Covid+ hospitalizations	Increasing to meet new threshold over a 7-day period	Decreasing to meet new threshold over a 7-day period	<10%	10-15%	15-20%	+33.7% >20%
	Do we have capacity to treat severe cases?	Acute care bed available capacity	Meet threshold for over 7 days	Meet threshold for over 7 days	23.6% >15%	10-15%	5-10%	<5%
	Do we have capacity to treat severe cases?	ICU bed available capacity	Meet threshold for over 7 days	Meet threshold for over 7 days	29.4% >20%	15-20%	10-15%	<10%
Disease Situation	Are there early indicators of an increase in Covid-19 disease	Number of new cases per day/100,000 population	Increasing to meet new threshold over a 7-day period	Decreasing to meet new threshold over a 7-day period	<1.8	1.8-4.0	4.0-6.0	9.4 >6
	Are we testing enough to detect cases?	Tests per day	Meet threshold for over 7 days	Meet threshold for over 7 days	3,316 >1,800	1,800-1,400	1,400-70	<700
Disease Control	Do we have robust contact tracing?	90% of new cases reached and named contacts reached	Meet threshold for over 7 days	Meet threshold for over 7 days	>90%	80-90%	76% 65-80%	<65%
	Are we protecting health care workers?	Percent of essential PPE with greater than a 30-day supply	Increasing over a 7-day period	Decreasing over a 7-day period	100%	89% 85-100%	60-85%	<60%

Disease burden: New cases/100,000 population



Hospitalizations have surged



Three
Unified
Commanders

Dr. Ayanna Bennett

DPH

Dariussh Kayhan

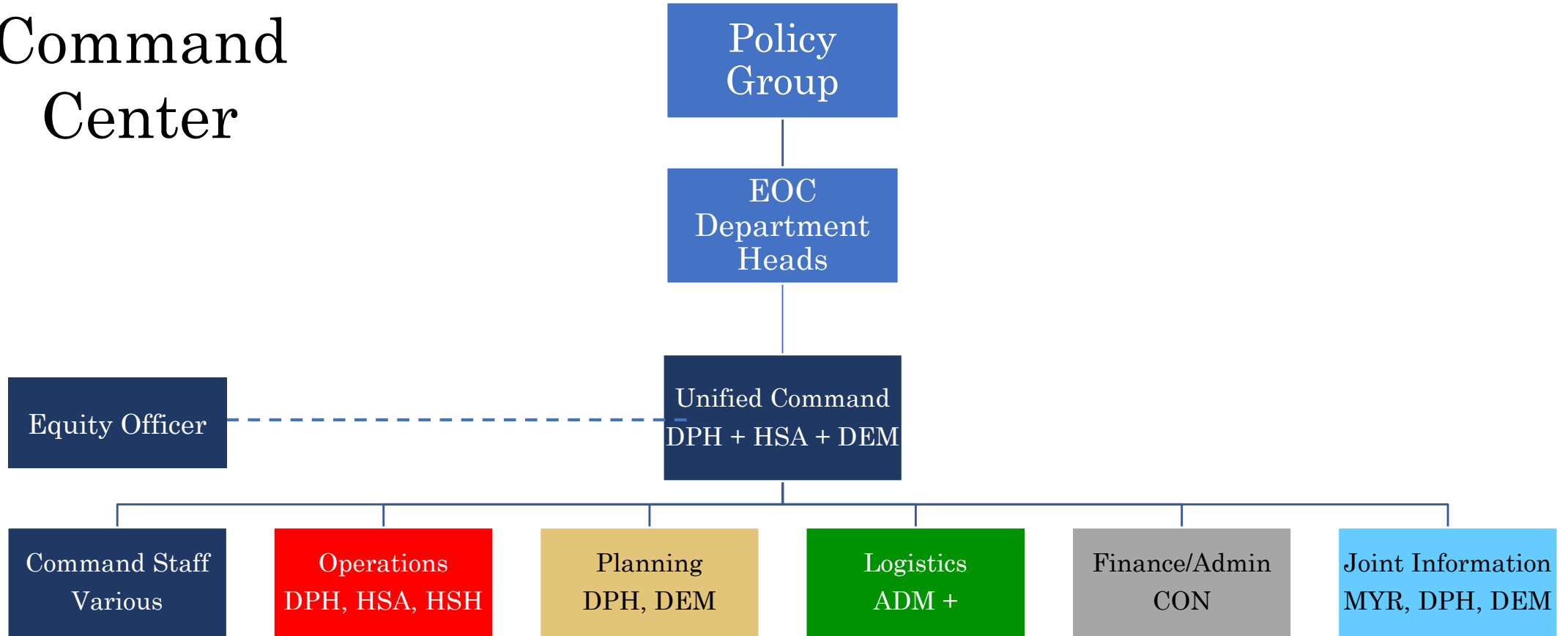
HSA

Adrienne Bechelli

DEM



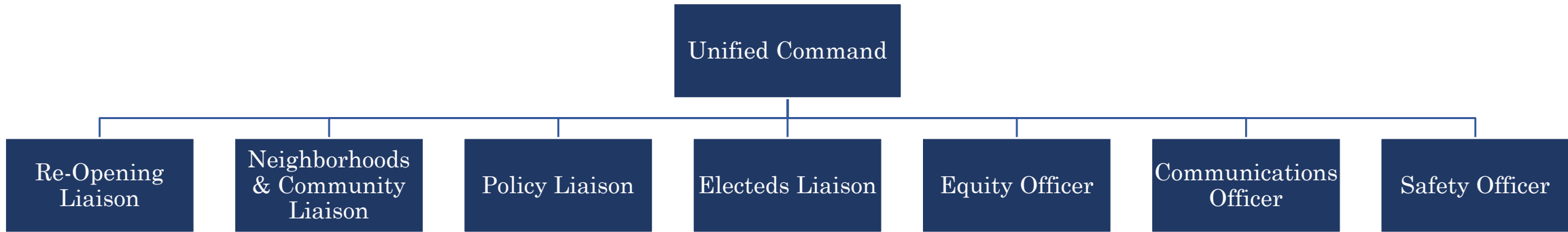
COVID Command Center



Command

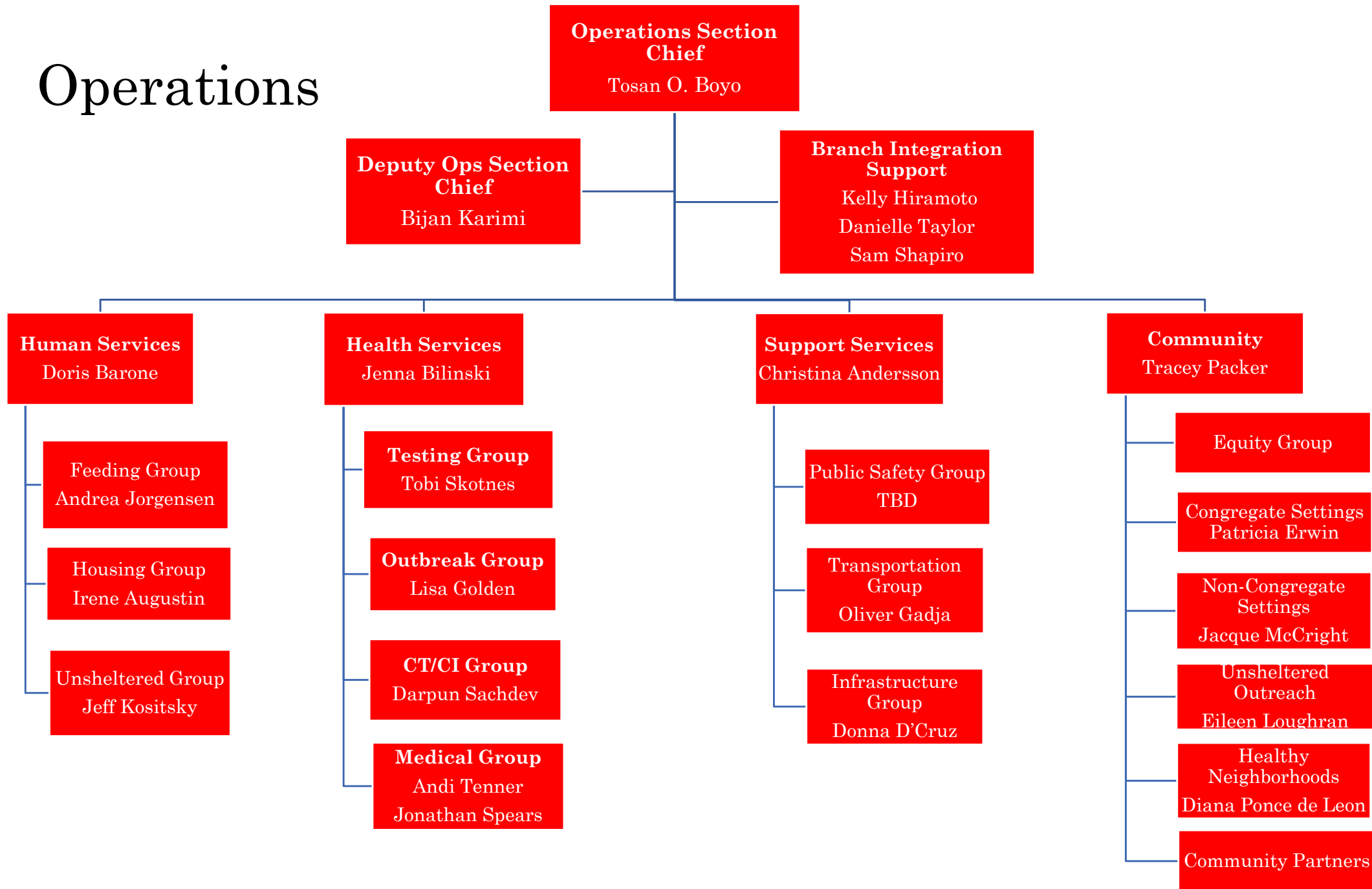


FOR OFFICIAL USE ONLY



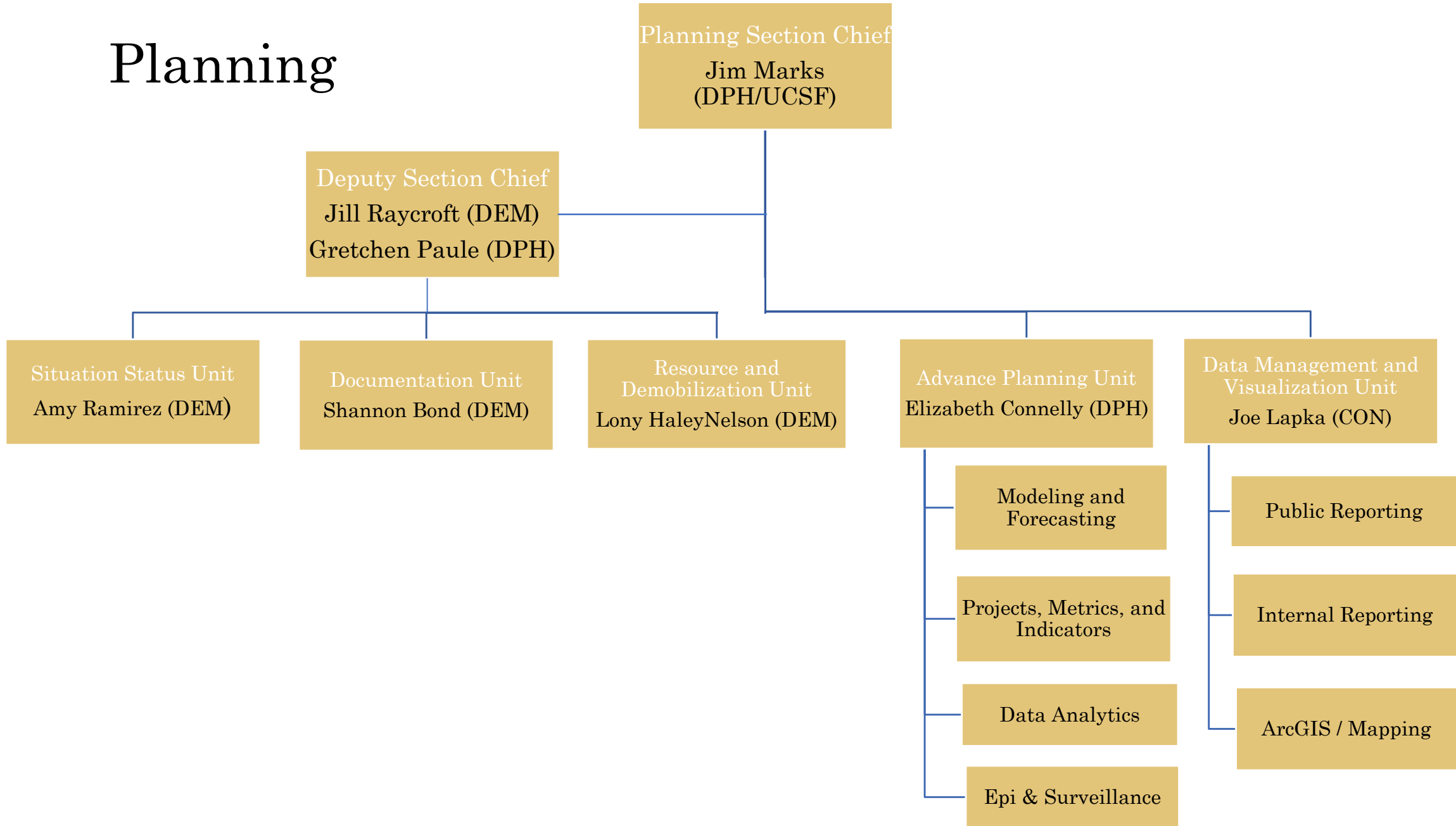


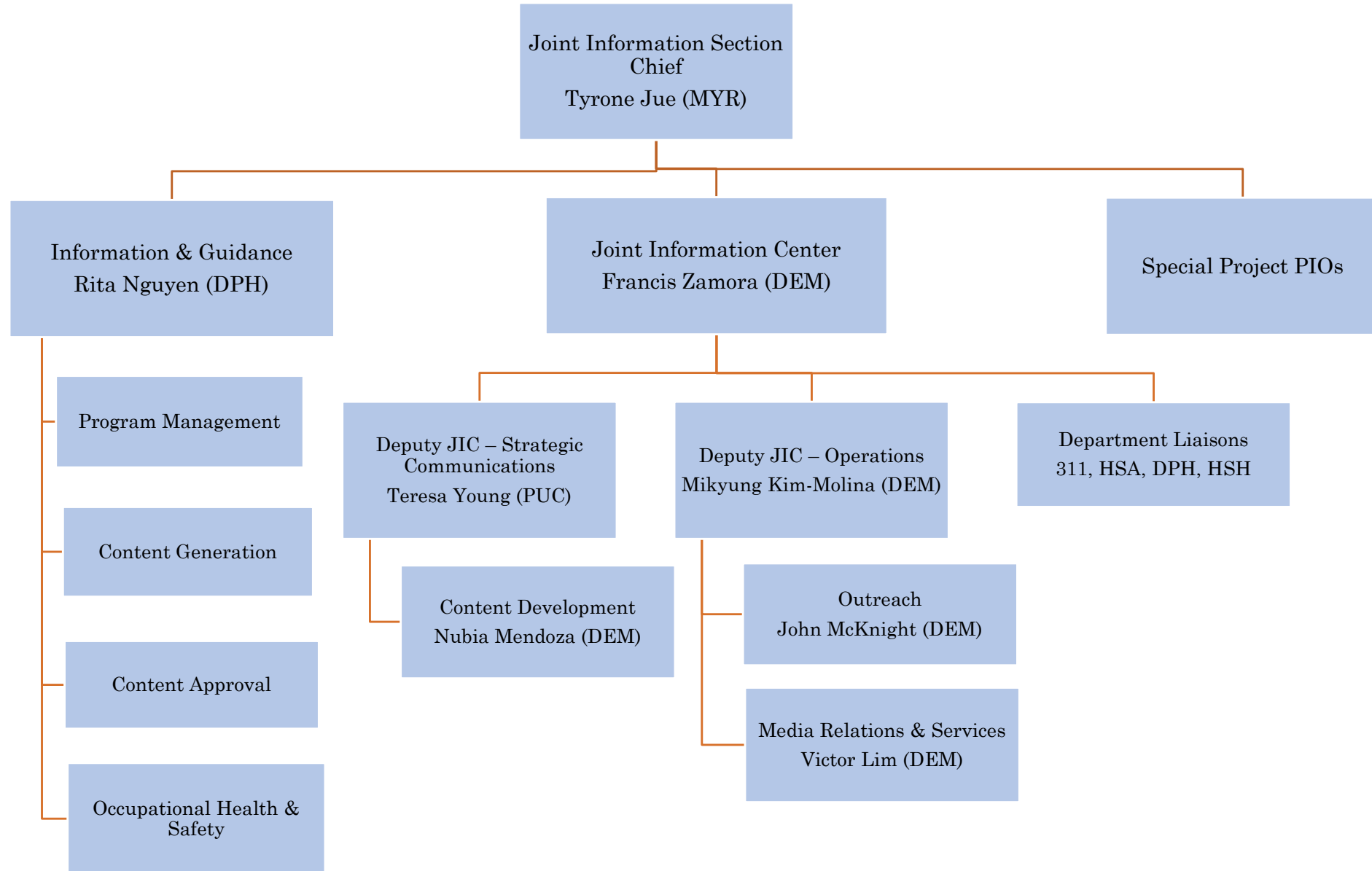
Operations





Planning





CCC Citywide Priorities – OP27

1. Ensure health and safety of COVID-vulnerable populations and essential workers
2. Reduce COVID transmission throughout San Francisco
3. Respond to medical surge
4. Prioritize equity and represent community needs in response planning and implementation
5. Maintain strategic public education campaigns that data, response, and public expectations & requirements
6. Coordinate with citywide re-opening and recovery initiatives
7. Plan for and coordinate during multi-hazard incidents



CCC Highlighted Objectives

Surge Playbook | Finalize comprehensive surge plan that outlines resource allocation, staffing needs, and appropriate communication needs based on identified indicators and triggers.

Community & Neighborhood Testing Strategy | Determine allocation of testing resources to best serve neighborhoods and communities with the greatest need

Mask Compliance Study | Assess current state of facial covering and social distancing compliance at Moscone South and in identified neighborhoods, and create a plan for achieving 80% compliance in sub-optimal locations

Long-Term DSW Deployments | Secure adequate staffing to support CCC response activities



Thank you!

